






NS-6045J-1

自動襯衫釘鈕機

Automatic Shirt Button Sewing Indexer



				
	2	2200RPM	DP x 5 #12~#14	



- 適用於男女裝襯衫鈕子筒自動釘鈕
- 適合二孔鈕和四孔鈕，可手動調節布夾距離，釘鈕數量可根據需要選擇
- 可根據鈕子寬窄手動調校鈕邊距離
- 採用高精度送鈕裝置，配合自動裁片送料系統，大大提高工作效率
- 備自動側面收料系統能整齊收料，方便操作
- 一人操作兩台機產量: 3300~3600件/8小時 (6粒鈕/件)
- 手動調節釘鈕範圍：320~620mm
- 手動調節鈕釦中心與鈕子邊距離：5~19mm

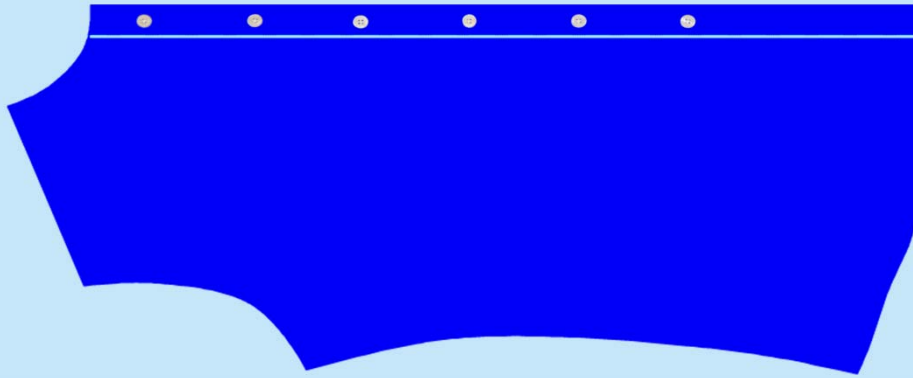
跟機件：

縫紉機(JUKI LK-1903BNSS301/MC672KNN)
 6個四孔送扣爪(一個已裝機，規格：1.2x2.7)，其餘5個規格分別為：1.2x2.4，1.2x2.7，1.2x3.2，1.2x3.4，1.2x3.6
 6個二孔送扣爪，規格分別為：1.2x2.4，1.2x2.7，1.2x3.2，1.2x3.4，1.2x3.6，1.2x3.8

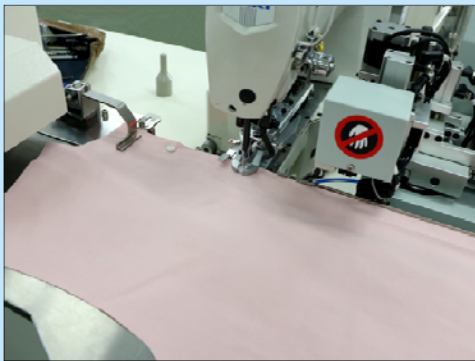
- Suitable for automatic button sewing on under placket of men or women's shirt
- Suitable for 2- and 4-hole buttons sewing, manual adjustment of distance between fabric clips; button sewing quantity can be preset
- The distance from button to under placket edge can be manually adjusted according to placket width
- Adopt highly accurate button feeding device and automatic fabric pieces feeding system to boost efficiency
- With a left-side automatic workpiece collecting device
- Output of one worker two machines: 3300~3600 pcs/8 hours (6 buttons/piece)
- Manual adjustment of button sewing range: 320~620mm
- Manual adjustment of button center to placket edge distance: 5~19mm

Standards:

Sewing head (JUKI LK-1903BNSS301/MC672KNN)
 6 pieces of 4-hole button feeding claws(one has been mounted, spec.: 1.2x2.7), the specs of other 5 pieces are respectively: 1.2x2.4, 1.2x2.7, 1.2x3.2, 1.2x3.4, 1.2x3.6
 6 pieces of 2-hole button feeding claws, respective specs: 1.2x2.4, 1.2x2.7, 1.2x3.2, 1.2x3.4, 1.2x3.6, 1.2x3.8



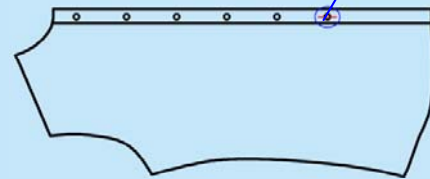
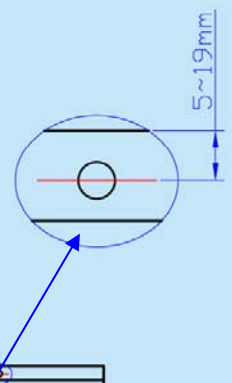
效果圖 Finished Result



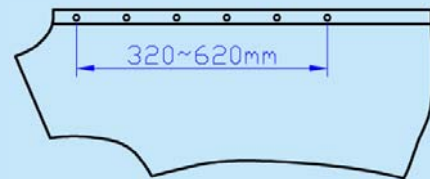
釘鈕操作 Button Sewing



自動收料系統 Automatic Collecting System



手動調節鈕釦中心与鈕子邊距離：5~19mm
Manual adjustment of button center to placket edge distance: 5~19mm



手動調節釘鈕範圍：320~620mm
Manual adjustment of button sewing range: 320~620mm

縫線Number of threads(根Thread): 8-8

鈕距 Button spacing(mm): 85

車速 Speed(RPM): 2200

車縫長度 Sewing length (mm): 510

單台產量 One m/c output(pcs/hr): 225
(6粒鈕buttons/件piece, 4孔鈕4-hole button)

型號 Model	適用衣車頭機型 Applicable Sewing Machine Head Model	電源 Power Supply	總功率 (kW) Total Power	壓縮空氣壓力 (kgf/cm ²) Compressed Air Pressure	耗壓縮空氣量 (L/min) Compressed Air Consumption	鈕釦直徑 (mm) Button Diameter	鈕釦厚度 (mm) Button Thickness	釘鈕範圍 (mm) Button Sewing Range	鈕釦至鈕子邊距離 (mm) Distance from Button Center to Placket Edge	機身尺寸 (mm) Machine Size
NS-6045J-1	JUKI LK-1903BN	1PH/220V/50Hz	0.9	5	10	Ø9~20	1.8~4	320~620	5~19	1800x920x1610



藝誠(余氏)發展有限公司
Ngai Shing Development Limited

香港九龍長沙灣永康街52號地下

G/F., 52 Wing Hong St.,

Cheung Sha Wan, Kln., Hong Kong.

Tel: (852) 2741 9981, 2742 0078

E-MAIL: info@ngaishing.com

Fax: (852) 2785 3149

Http://www.ngaishing.com